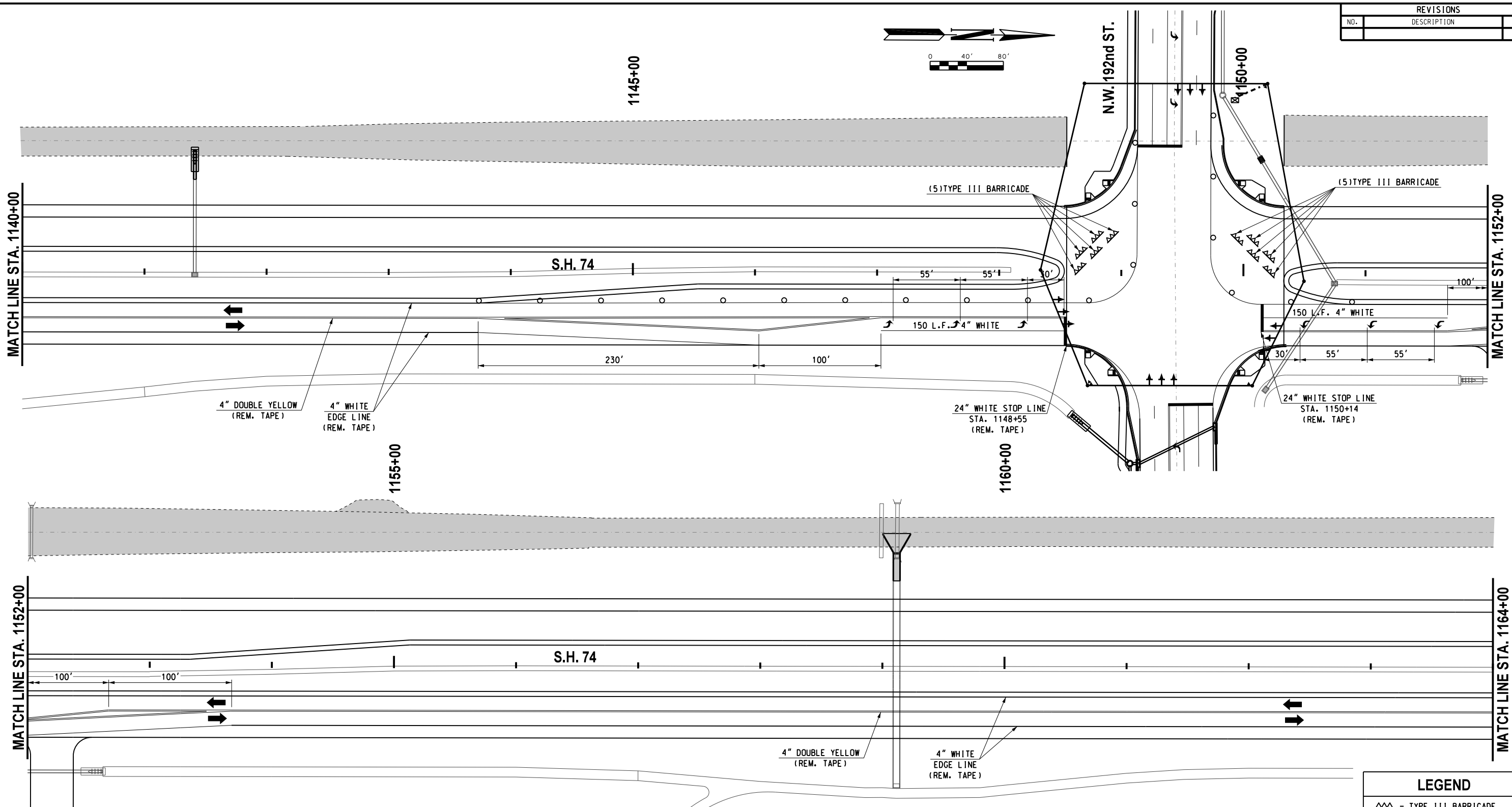
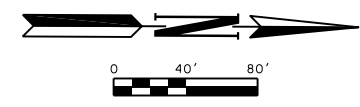


REVISIONS		
NO.	DESCRIPTION	DATE



MATCH LINE STA. 1140+00

MATCH LINE STA. 1152+00

MATCH LINE STA. 1152+00

MATCH LINE STA. 1164+00

ALL PAVEMENT MARKINGS  
SHALL BE REMOVABLE  
TAPE

CONTRACTOR SHALL KEEP  
11' MINIMUM LANES UNLESS  
OTHERWISE NOTED.

CONTRACTOR TO PROVIDE  
ACCESS TO ALL DRIVEWAYS  
DURING CONSTRUCTION.

LEGEND	
△△	- TYPE III BARRICADE W/ TWO TYPE "A" LIGHTS
●	- DRUM
○	- CHANNELIZER CONE
▬	- PORTABLE CONC. BARRIER WALL
▬▬	- CONSTRUCTION ZONE IMPACT ATTENUATOR
■	- WORK AREA

Design	RWR	08/10/17
Drawn	GDB	08/10/17
<b>TEC</b> A CLEAR DIRECTION		

**TRAFFIC CONTROL**  
**PHASES 30,P,Q,R,S & T (SHEET 4 OF 7)**  
**S.H. 74 (STA. 1140+00 TO 1164+00)**  
 State Job No. 14964(08) Sheet No. T80

08/10/17 G:\Projects\T-1662B SH 74 @ NW 178th, NW 192nd & NW 206th\CAD\TC PHASE 30PQRS1-4 SH 74.dgn